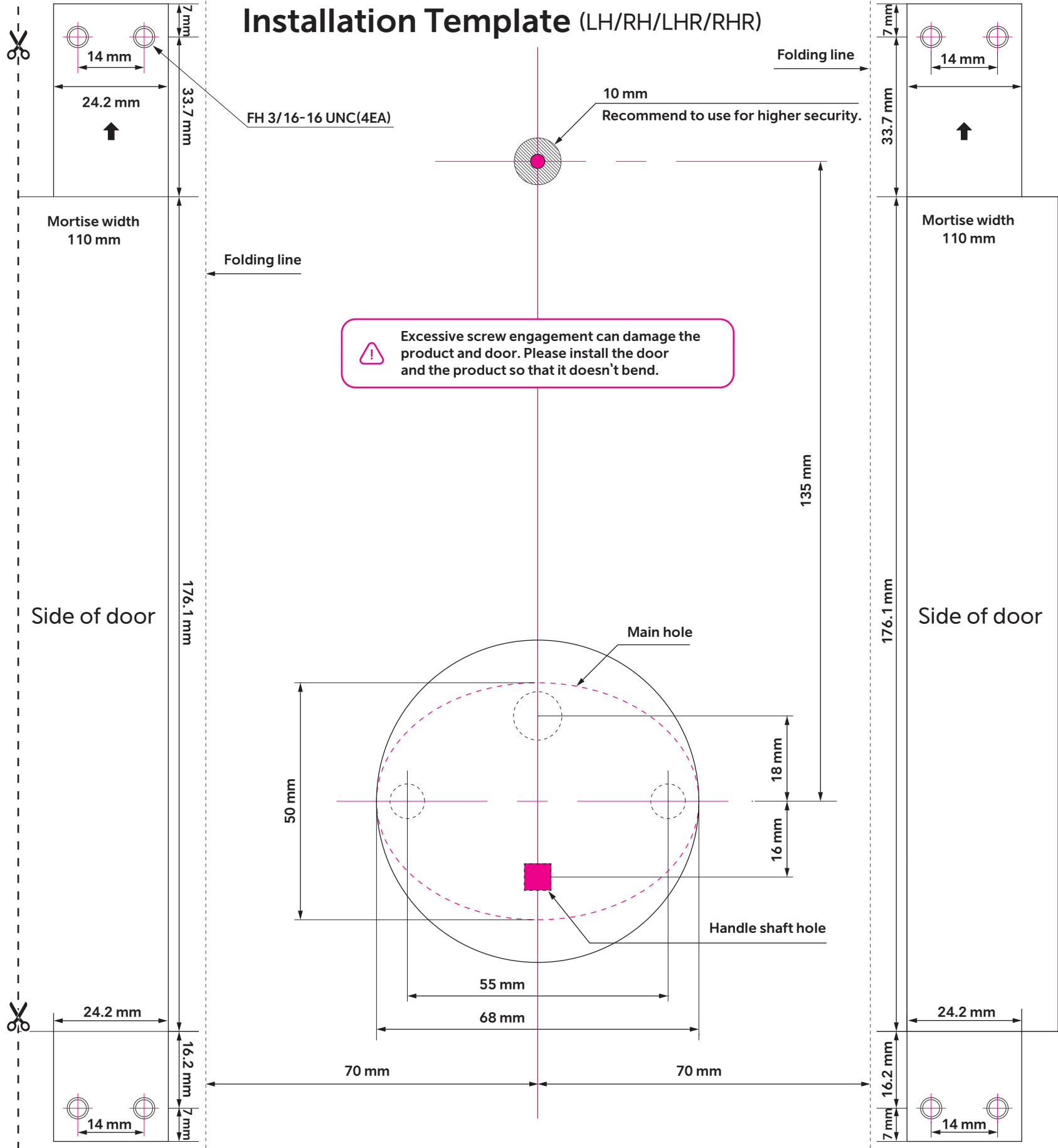
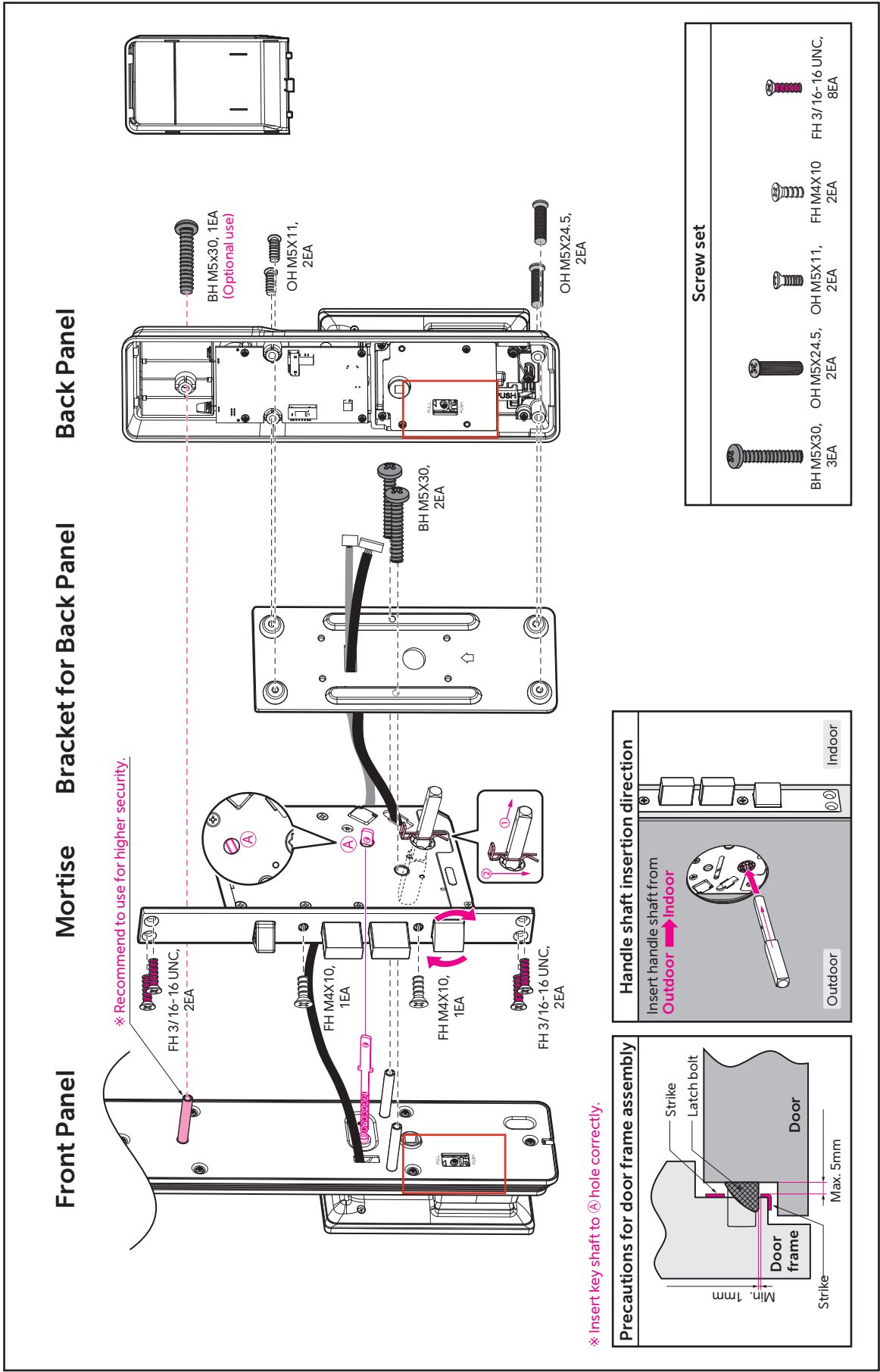


Installation Exploded View(PP8000)



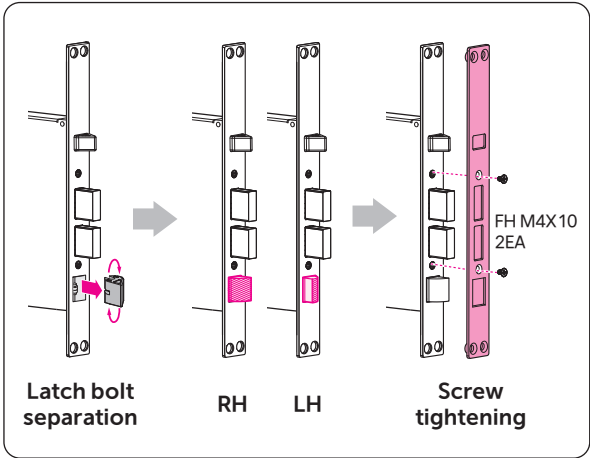
STEP 1 - How to install : Mortise Lock

Notice

- Installation method for left handed door and right handed door is same.
- Before installation, adjust the direction of latch bolt and striker as per door opening direction.

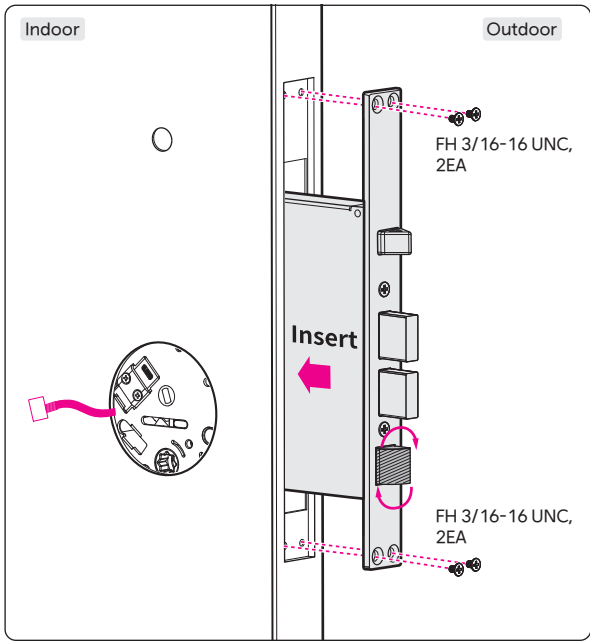
Change latch bolt direction

1. Check the opening direction of the door, remove the latch bolt, and engage it in the correct direction.
2. Confirm the direction of latch bolt and fix the plate using FH M4X10, 2EA.



Install mortise

1. Insert mortise to side of door and pull out cable to indoor.
2. Fix the plate using FH 3/16-16 UNC, 4EA.

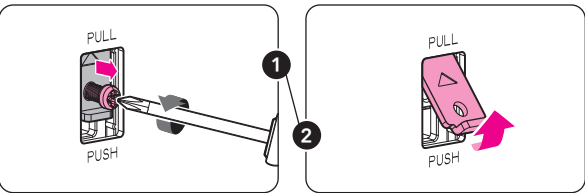


How to change Push-Pull directions

Please double check the 'Direction change plate' located on the lower inside of the Front body and Back body. When installing the door lock on a door that is opened by pushing from the outside into the indoor, you must change the push/pull direction of the door lock before installation.

Before installing the door lock, please check the opening direction of the fire door and the digital door lock, and change the direction according to the guide as below before installation.

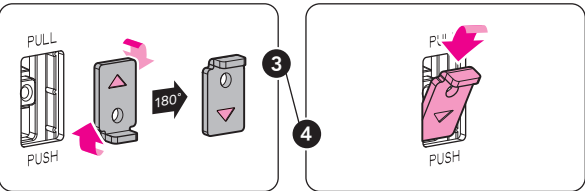
※ Please wear gloves for safety, as the edges may be sharp during installation.



Unscrew the screws.

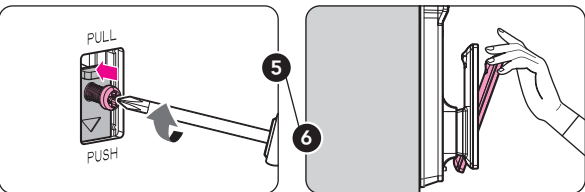
Remove the 'direction change plate'.

※ Be careful as the edges may be sharp.



Rotate the direction change plate 180 degrees so that the arrow marking is pointing downwards.

Please double check that the arrow marking is correct, then reassemble it.

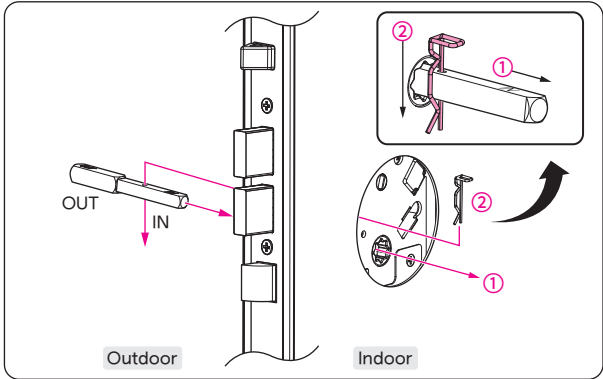


Fasten the screw.

Test to ensure that the handle direction has been properly changed.

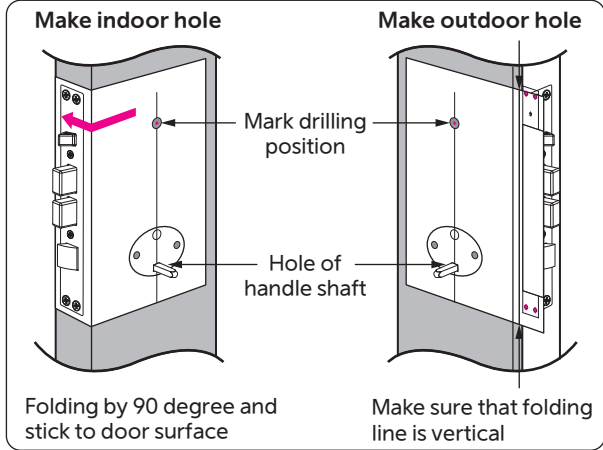
STEP 2 - How to install : Product

1. Insert handle shaft from outdoor to indoor and fix stop ring to the hole on indoor side of handle shaft.



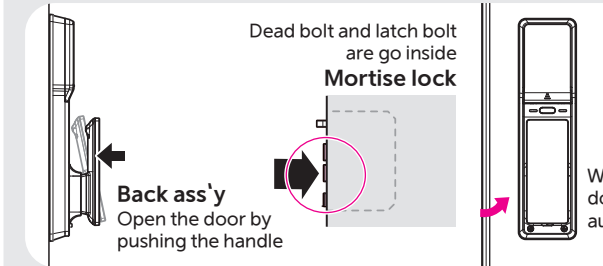
2. Insert handle shaft to rectangular "Handle shaft hole" of installation template and stick the template to indoor side. Fold the template along to folding line.

3. Fix the exact position of template and mark the drilling position for hole making. Change direction of template and mark the drilling position on opposite side in same way.



4. Make hole as per specification. (Ø10) (Recommend to use for higher security.)
5. Select Push-Pull direction of Front cabinet & Back cabinet before installation. (Refer to instruction of "How to change Push-Pull directions".)

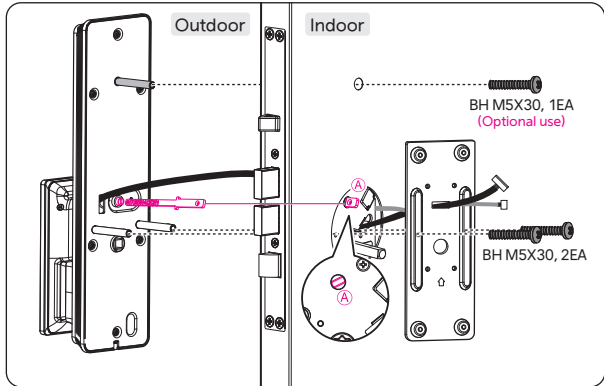
Check operation of product



Checking point after installation

- ✓ Insert batteries correctly and do open/close test at indoor.
- ✓ Register PIN code as per user manual.
- ✓ Factory setting : Normal mode, PIN code '123456'

6. Put the cable of front ass'y through the main hole to indoor. Pull out the cable from front ass'y and mortise lock cable through the hole of bracket for back ass'y.
7. Confirm the cable is not jammed and fix the front & bracket for back ass'y by screws. (BH M5X30, 2EA)

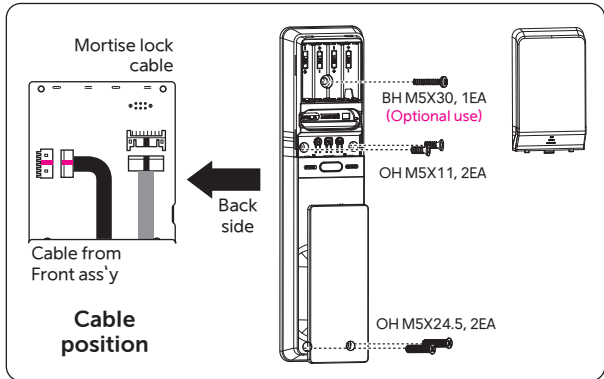


Door Thickness	Key tail plate	Door Thickness	Key tail plate
35 mm	1	60 mm	4
40 mm	2	70 mm	5
50 mm	3	80 mm	6

※ Insert key shaft to ① hole correctly.

8. Connect two cable to back cabinet exactly. Make sure to organize the cables properly so that they do not overlap each other during fastening.

9. Open the battery cover of back cabinet and fix using screws. (Top BH M5X30, 1EA(Optional use) / Middle OH M5X11, 2EA / Bottom OH M5X24.5, 2EA)



10. Close battery cover after installation.