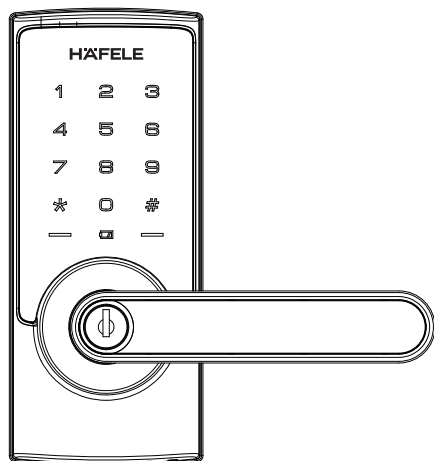




HÄFELE

Digital door lock
Model DL6500



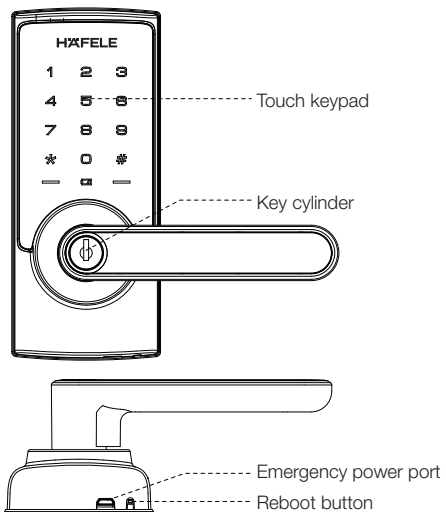
DL6500

Installation guide

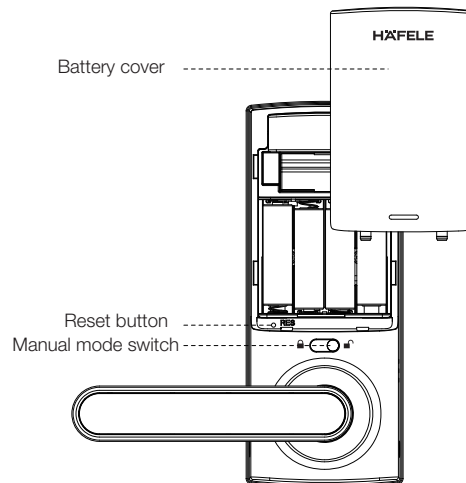


Product specifications

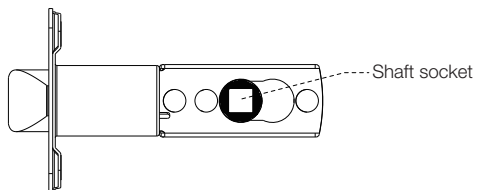
Outside panel



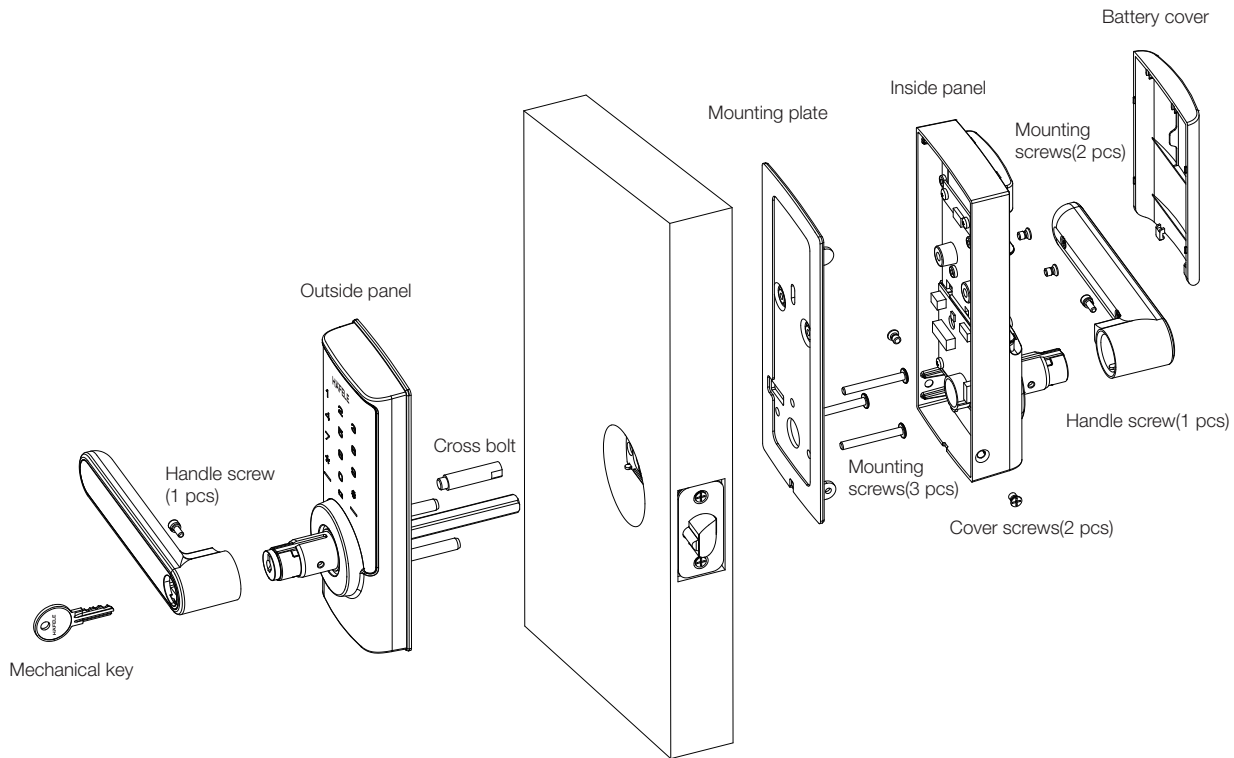
Inside panel



Latch lock



✓ Product specifications

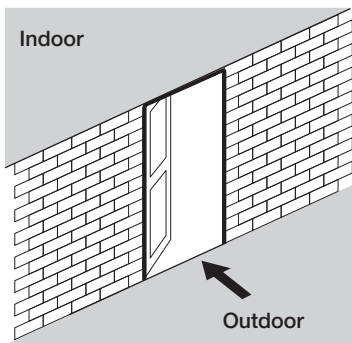




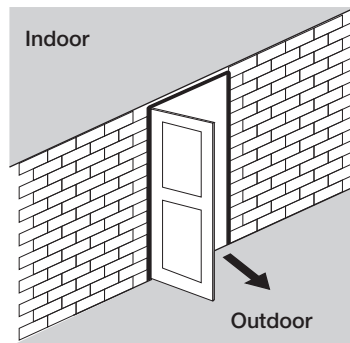
Preparing for installation

Check door open direction

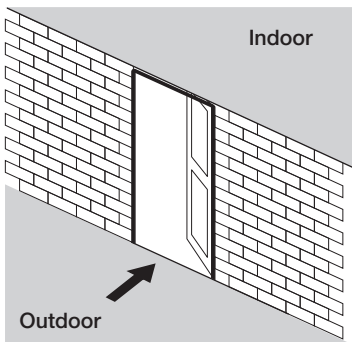
This product fits for all door open directions Left-in / Left-out / Right-in / Right-out.



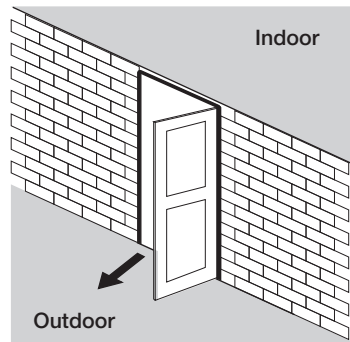
Left-in



Left-out



Right-in

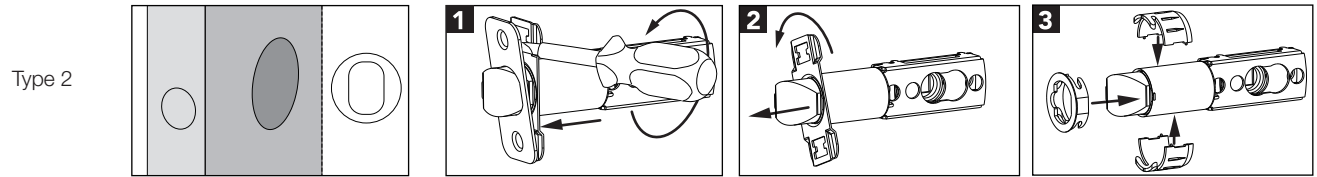
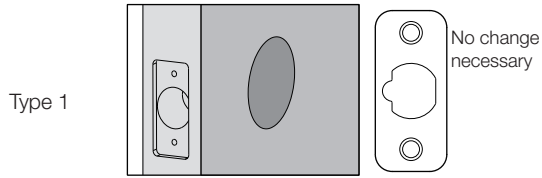


Right-out

✓ Preparing for installation

Change the faceplate (If necessary)

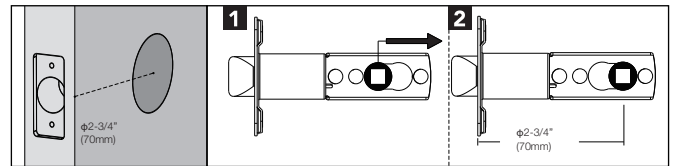
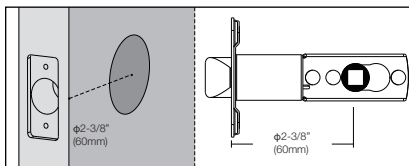
Check the type of door frame sockets to be installed.



Follow the 3 steps to complete the faceplate replacement.

Adjust the backset

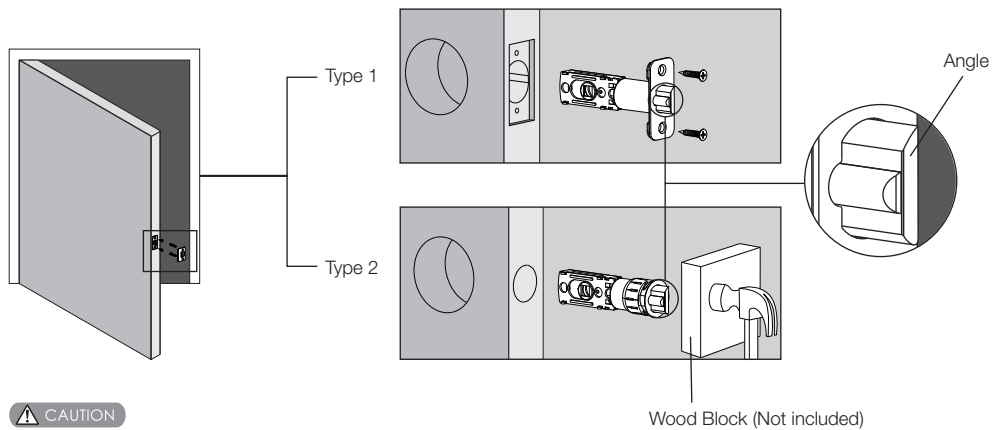
This latch lock can be adjust the backset from 60 mm to 70 mm by following the below picture.





Installation

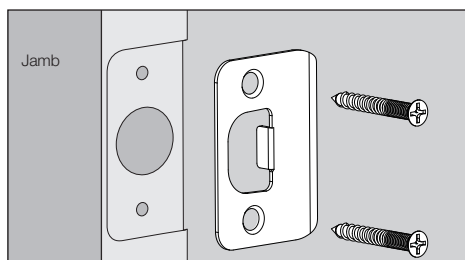
1. Mark and drill bores by using the installation template first, then fix the latch lock into the door frame.



CAUTION

Make sure latch angle face door jamb.

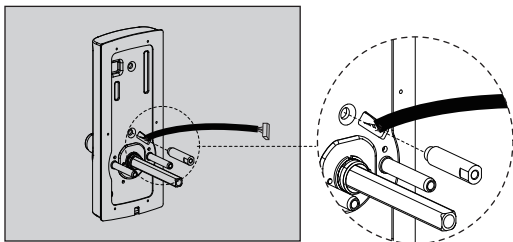
2. Install strike plate onto door jamb.



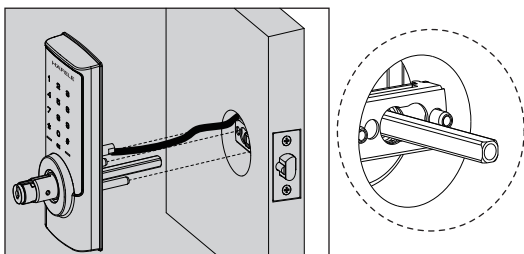


Installation

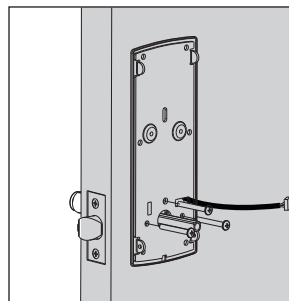
3. Fix cross bolt on the front panel.



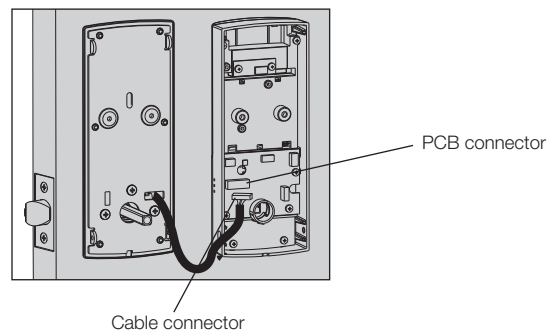
4. Pass the connection wire through the top bore. Then align and insert square shaft into shaft socket to make the front panel fit against the door closely.



5. Pass the connection wire through the mounting plate and install the mounting plate with fixing screws tightly against the door surface.

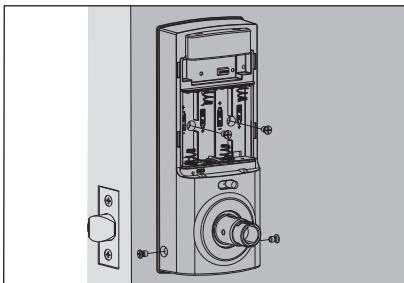


6. Insert the connecting wires of front panel into the related sockets of the back panel.

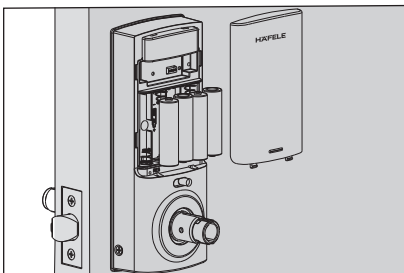


✓ Installation

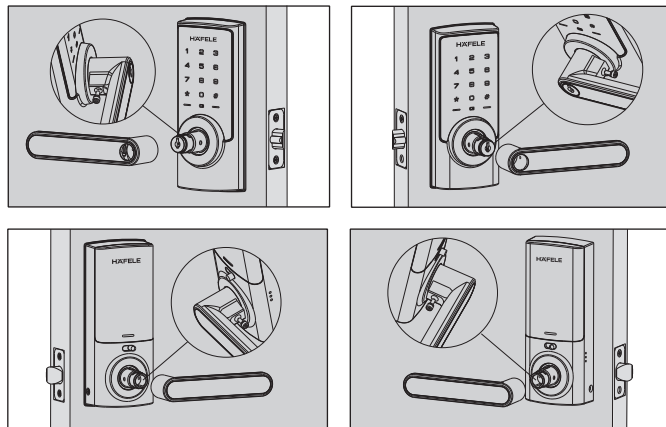
7. Make the back panel fit against the door closely.
Then tighten fixing screws.



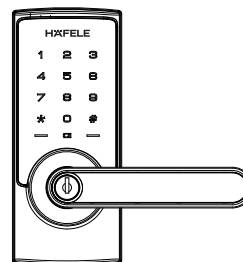
8. Install the batteries and the battery cover.



9. Install the exterior and interior handle, then tighten the fixing screw.



10. Please check handle and mechanical key for proper operation.



⚠ CAUTION

Test if mechanical key works smoothly after installation.